

# Olympus Lock - Fall Special

Pricing good through October 31, 2012

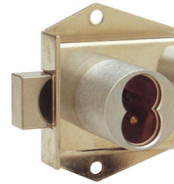


**kdlhardwaresupply**

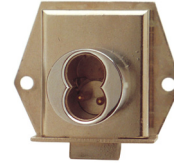
GSA Contract #GS-07F-0442X  
Veteran Owned Small Business



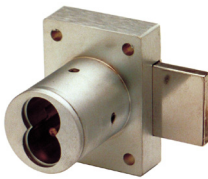
**720LM/DM**  
Cam Lock



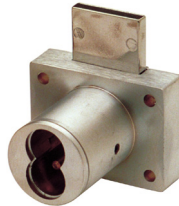
**725MD**  
Mortise Deadbolt



**725ML**  
Mortise Latch



**721DR**  
Door Lock



**721DW**  
Drawer Lock



**725RD**  
Rim Deadbolt



**725RL**  
Rim Latch

## Olympus Lock - SFIC Cabinet Lock Bodies

Item	Size	Finish	Special Net
<b>720LM/DM</b>	Fits up to 1-1/8" material	US26D, US26, US3, US4	<b>\$25.50 ea.</b>
<b>721DR</b>	1-1/4" barrel length	US26D, US26, US3	<b>\$25.50 ea.</b>
<b>721DW</b>	1-1/4" barrel length	US26D, US26, US3	<b>\$25.50 ea.</b>
<b>725MD</b>	1-1/16" barrel length	US26D, US26, US3, US4	<b>\$25.50 ea.</b>
<b>725ML</b>	1-1/16" barrel length	US26D, US26, US3, US4	<b>\$25.50 ea.</b>
<b>725RD</b>	1-1/16" barrel length	US26D, US26, US3, US4	<b>\$25.50 ea.</b>
<b>725RL</b>	1-1/16" barrel length	US26D, US26, US3, US4	<b>\$25.50 ea.</b>

• All items include 725-PA black plastic actuator • 721 and 725 series locks include matching strikes • 725 series available LH, RH, VH or IH • 721 special net pricing not available on key-retaining function • See our website for a complete list of optional accessories and SFIC cores • SFIC cabinet lock bodies accept 6 or 7 pin Best, Arrow, Falcon, KSP or other compatible small format interchangeable cores



**kdlhardwaresupply**

"Selling Peace of Mind Since 1919"

**KDL Hardware Supply, Inc.** Toll-free 800-926-7716  
850 Poplar Place S Phone 206-682-7383  
Seattle, WA 98144 Fax 206-624-9305

[www.kdlhardware.com](http://www.kdlhardware.com)

**OLYMPUS LOCK, INC.**

*The cabinet lock innovators.*

[www.olympus-lock.com](http://www.olympus-lock.com)

Your IC cabinet lock specialists